

Surf it Easy™

User Guide

powered by



COSOSYS

User Manual Version 1.1

© 2004 CoSoSys SRL

Table of Contents

Table of Contents	I
1. Introduction	1
2. System Requirements	2
3. Installation	2
4. Getting Started	2
4.1. Start Surf it Easy	2
4.2. General Navigation	3
4.3. USB Drive Capacity	3
5. Working with Surf it Easy	4
5.1. Internet Favorites Synchronization	4
5.2. No Trace Internet Browsing	5
5.3. Deleting Internet browsing history	5
5.4. USB Drive Lost & Found™	6
5.5. Work with the system tray menu	6
5.6. Safely remove hardware.....	6
5.7. Configuring Multiple Devices at the same time	7
6. Support	7

1. Introduction

Surf it Easy™ will enhance the functionality of your USB Drive and help you keep your personal data available on the road.

With **Surf it Easy** and your USB Drive you can:

keep your **Internet Favorites** synchronized,

surf the internet without leaving a trace behind,

and in case you loose your USB Drive, the finder can contact you just by using the

USB Drive Lost & Found™ information.

Warning!

While using Surf it Easy, you should never unplug your USB Drive without closing Surf it Easy properly first, via the exit button and then using the “Safely Remove Hardware” option.

To use Surf it Easy, it is required to format your USB Drive. Make sure to make a backup of all your Data on the USB Drive before you run Surf it Easy otherwise your data will be lost.

2. System Requirements

- Operating Systems:
 - Windows 2000
 - Windows XP
 - Administrative rights on your computer
- Internet Explorer Version 5.0 and higher
- Available USB port
- USB Drive (USB Flash Memory Drive).
If your USB Drive has a manual write protection switch it must be in the unprotected position in order to be able to use Surf it Easy.

3. Installation

Surf it Easy comes pre-installed on your USB Drive. No installation process on your PC is needed. Simply double-click the SurfItEasy.exe file and you can immediately start using the application.

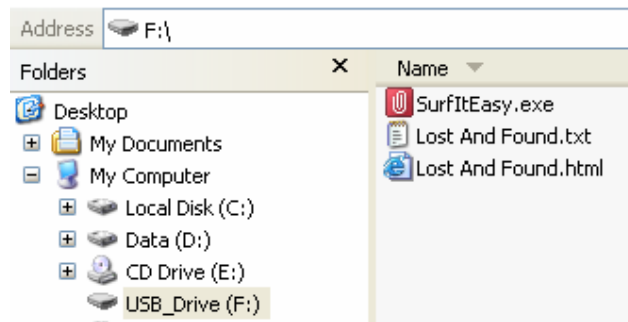
In case your USB Drive didn't include a CD-ROM with a copy of Surf it Easy we recommend, that you make a backup copy of the SurfItEasy.exe to another storage device.

4. Getting Started

4.1. Start Surf it Easy

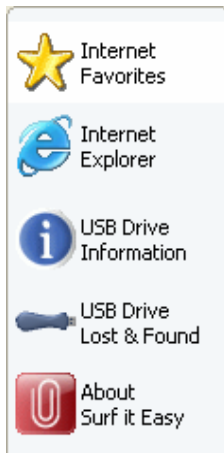
To start Surf it Easy, plug-in your USB Drive and open My Computer (Windows Explorer).

Open the USB Drive or removable storage drive with the drive letter e.g. D: or F: depending on your computer and double-click the SurfItEasy.exe to start the application.



The SurfItEasy.exe file will remain on your USB Drive in order to be able to use the application when you switch between different computers. Please always run the application from the USB Drive and not from your hard disk or your desktop.

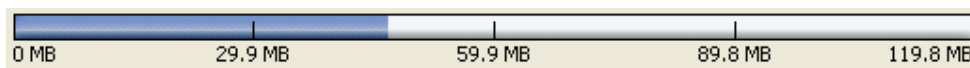
4.2. General Navigation



Every time you start Surf it Easy, you will come first to the welcome window either directly or after having logged in with your password. On the left side of the window you will have the main functions permanently available. Just click for example the Internet Favorites option, and you will have the function available. You also have access to most features through the system tray icon. The system tray functions are described below.

4.3. USB Drive Capacity

On the bottom of the main window, you always have displayed a fill bar indicating the capacity available and the already used capacity of your USB Drive. When you make a new selection e.g. of the Favorites folder, the fill bar will jump to the new capacity used to indicate what capacity would still be left.



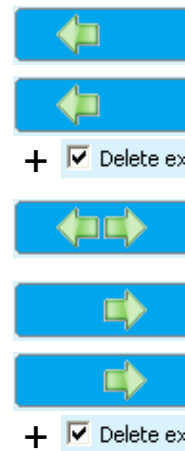
5. Working with Surf it Easy

5.1. Internet Favorites Synchronization

To synchronize your Internet Explorer Favorites, you have the choice of 5 different synchronization options. Before you start using this feature, you should familiarize yourself with these options. After you have synchronized your Internet Favorites, you can view your Favorites in the internet Explorer, when you activate the No trace browsing option and launch an Internet Explorer.

The synchronization options are:

- a) Creates missing and updates older Favorites on the Computer
- b) Replaces all Favorites on Computer with the USB Drives Favorites
- c) Creates and updates all missing or older Favorites
- d) Creates missing and updates older Favorites on the USB Drive **(default option)**
- e) Replaces all Favorites on USB Drive with the Computers Favorites



Options a, c and d are chosen by selecting the respective arrow buttons and options b and e are chosen by selecting the “Delete existing...” tick bock and the respective arrow buttons.

After you have selected your preferred synchronization option you can start the synchronization process by clicking the “Synchronize” button.

When synchronization starts a progress bar will indicate that the process has begun and that your Internet Favorites are being transferred. The “View Details” option in the progress bar will only display possible errors that have occurred during synchronization. When the synchronization is finished the “Finished” button becomes active indicating that the process has ended.

It can take a few minutes to synchronizing a large number of Internet Favorites.

To delete Internet Favorites on your USB Drive or on your Computer you can use the options in the Internet Explorer window.

5.2. No Trace Internet Browsing

With the “Internet Explorer – No Trace Internet Browsing” option you can surf the internet without leaving a trace behind on the computer you have your USB Drive plugged into.

To activate No Trace Browsing simply click on the “Activate No Trace Internet Browsing” option in the Internet Explorer window of Surf it Easy. In case you have an Internet Explorer window already open you will be asked if you want to close it.

When now opening an Internet Explorer either via the “Start No Trace Browsing” button, or by starting the Internet Explorer any other way, you will not leave a trace behind on the used computer.

When No Trace Browsing is active you will see in the Internet Explorer windows header “Surf it Easy – No trace browsing” written. All the temporary files, history and cookies will be redirected and saved on your USB Drive and not the Computer.

If you have synchronized your Internet Favorites you can access them through the “Favorites” button in the Internet Explorer.

After every use we recommend that you delete the Temporary Files, Cookies and the History from your USB Drive as described below, in order to free up valuable memory space on your USB Drive.

5.3. Deleting Internet browsing history

To delete your Internet browsing history on the Computer or on your USB Drive, go to the “Internet Explorer - No Trace Internet Browsing” window of Surf it Easy. Select the objects you want to remove such as Internet Favorites, Temporary Files, History or Cookies and click the “Delete trace” button. You will be asked if you are sure you want to permanently delete the selected objects. After confirming a progress bar will indicate that the deletion is in progress. If you are removing a large amount of files, it can take a few minutes until the process is finished.

5.4. USB Drive Lost & Found™

In case your USB Drive might get lost, you can now thanks to our Lost & Found Function, let the finder know who is the owner of the USB Drive. Even if you have chosen to password protect all your data, the finder will still be able to contact you, without having access to your data on the USB Drive.

To use Lost & Found, simply fill out the form fields provided in the Lost & Found window and click the “Apply” button. A success message will confirm you that the process was successful.

5.5. Work with the system tray menu

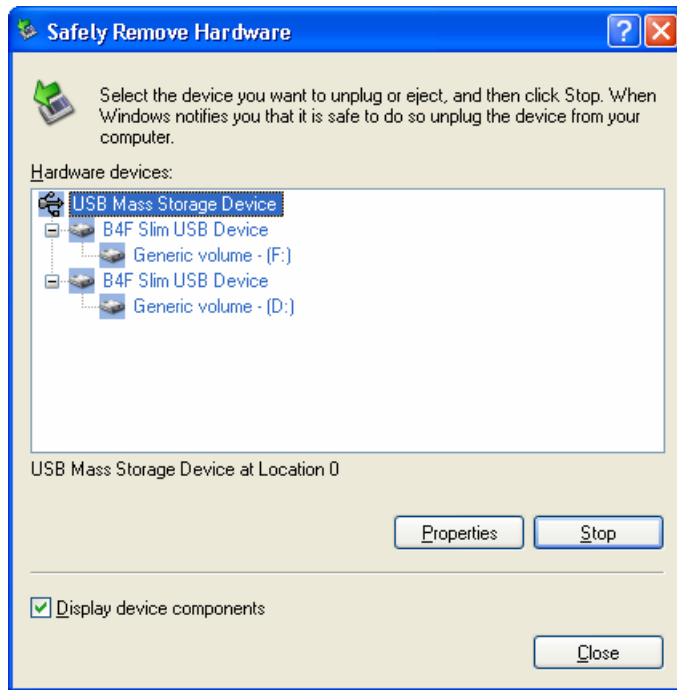
Via the Surf it Easy Icon in the system tray you are able to reach all the Surf it Easy options. With the Quick start option, you are able to start an Internet Explorer window with your Favorites.

5.6. Safely remove hardware

Before you unplug your USB Drive from the USB port of your computer, you have to use the “Safely Remove Hardware” option from the system tray, otherwise you risk corrupting the data stored on your USB Drive.

To “Safely Remove Hardware”, double-clicking the system tray icon and then select the USB Drive you want to remove from the list and click “Stop”.





A message will appear indicating that the USB Drive can now be securely removed.

5.7. Configuring Multiple Devices at the same time

If you have more than one USB Drive connected to your computer you have to select from the Surf it Easy device list which one you will continue to configure.

6. Support

In case additional help, such as the FAQs or e-mail support is required click in the “About Surf it Easy” opting of the application on the “Online Help” link and you will be directed automatically to our support website.

Or you can visit the support website directly at

<http://www.cososys.com/support/sie/help.html>

© 2004 CoSoSys SRL; “Surf it Easy™” and “USB Drive Lost & Found™” are trademarks of CoSoSys SRL. All rights reserved. Windows, Internet Explorer are registered trademarks of Microsoft Corporation. All other Names and Trademarks are property of their respective owners.