

5

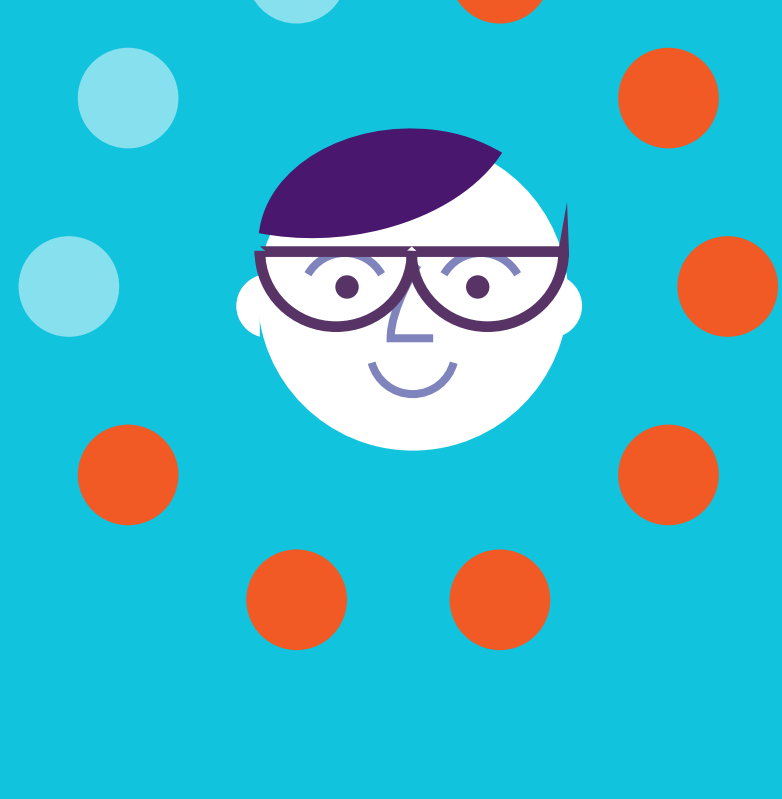
Steps to determine if insiders should be your primary concern for data security

Powered by EndpointProtector.com

1

Check what documents employees have access to

Financial docs, customer database, marketing strategy



7 out of 10

employees have access to confidential files and use them in their daily work



6 out of 10

employees are not aware which files are confidential and which are not



4 out of 10



employees can tell you an incident with a colleague posting confidential information on social media or other places where it shouldn't be

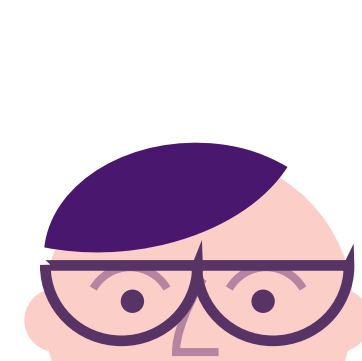
2

See what tools employees are using to share files

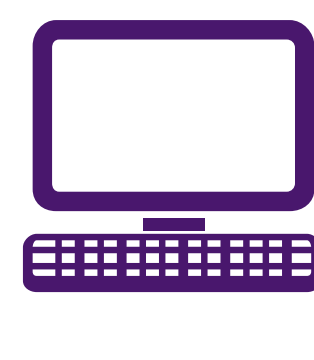
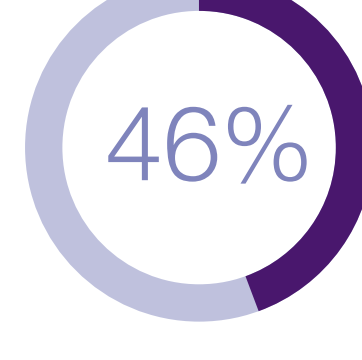
Skype, Dropbox, Outlook, USB devices



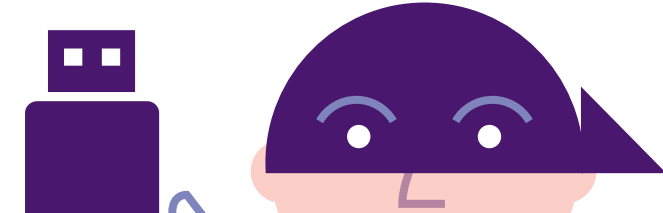
90%



of employees use Outlook to share files with co-workers, collaborators, and other recipients



46% of insiders copy files from work on personal computers or remotely connect to the company network to continue working home



TOP 3

causes for worldwide data breaches include lost or stolen unencrypted USB devices

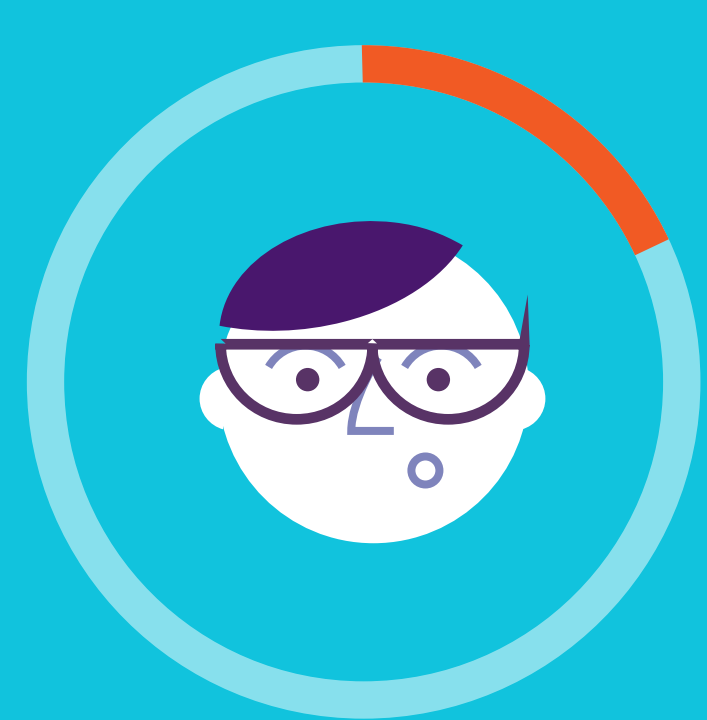
2

1

3

3

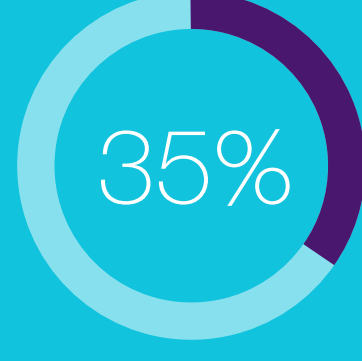
Create a short quiz to find out employee's knowledge regarding data security



18%



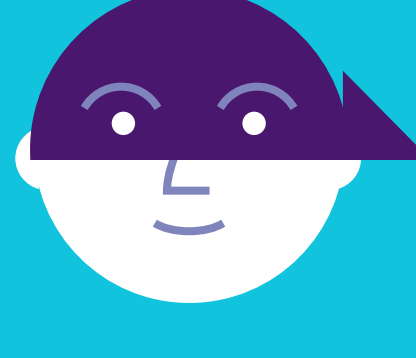
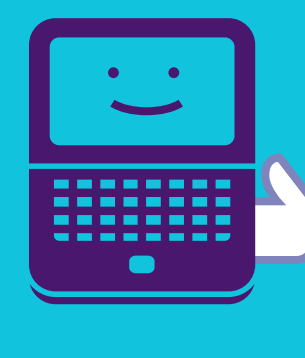
of employees share passwords with co-workers



35% of employees think that data security is not their responsibility



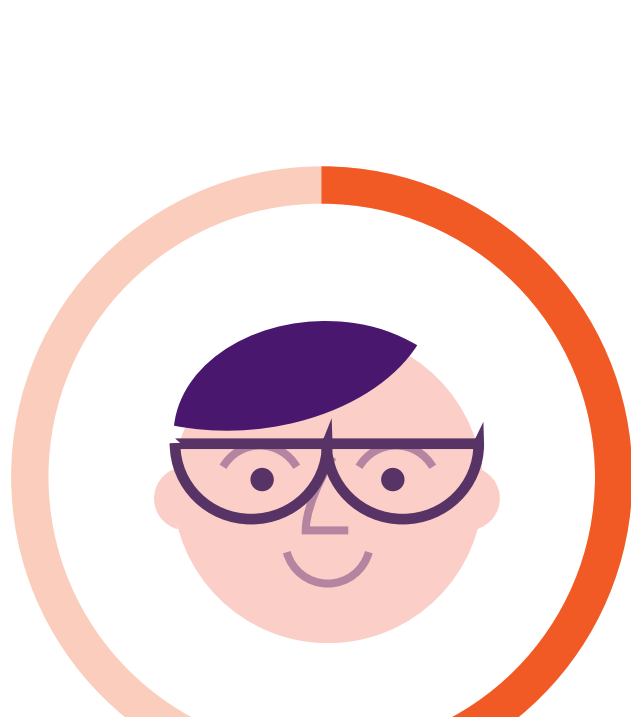
59% of employees think that losing a mobile device or a laptop with company data doesn't represent too big of a threat



4

Determine if your current security tools can detect a breach caused by insiders in case it happens

Can you spot the person who sent the financial report to a suspicious recipient?

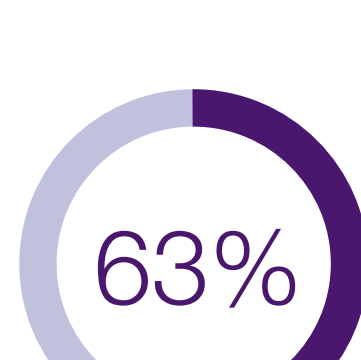


50%

of employees have sent e-mails to the wrong person

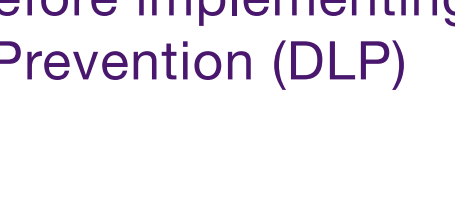


What if users Copy & Paste confidential data to Google Drive?



63%

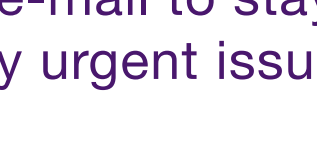
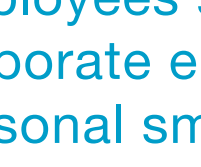
of companies couldn't establish for sure how the breach occurred before implementing a Data Loss Prevention (DLP) solution



Do you know how many employees sync their corporate e-mail on their personal smartphone?

68%

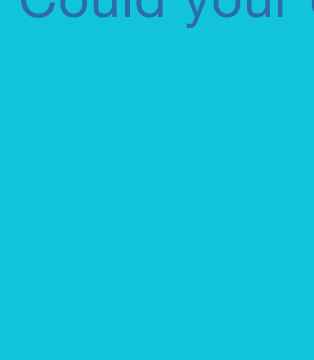
of employees prefer to sync their company e-mail to stay up to date with any urgent issues



5

Do your research to find the data breaches financial and other damages

Could your company cover those costs?



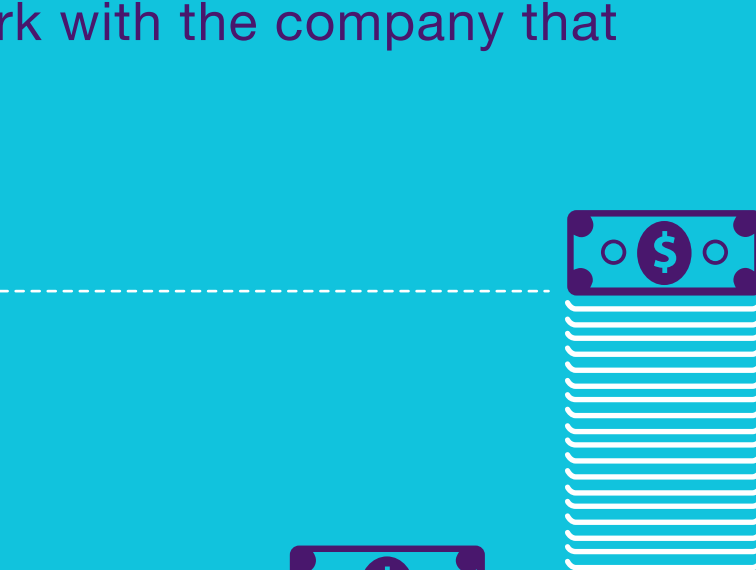
40% of potential customers would not work with the company that suffered a recent data breach

\$4.8

million is the highest fine until 2014 settled for a data breach which violated the HIPAA regulation*

\$3.5

million is the average cost of a data breach**



Source: CoSoSys research on customers with an average of 500 computers from the following regions: USA, LATAM, Europe, and Asia

*<http://www.hhs.gov/news/press/2014pres/05/20140507b.html>

**[http://www.darkreading.com/attacks-breaches/ponemon-cost-of-a-data-breach-rose-to-\\$35m-in-2013/d-d-id/1251019](http://www.darkreading.com/attacks-breaches/ponemon-cost-of-a-data-breach-rose-to-$35m-in-2013/d-d-id/1251019)