



ENDPOINT PROTECTOR

Version 1.0.0.3

Active Directory Deployment Guide



Table of Contents

1. Introduction	1
2. Creating the WMI filters	2
3. Creating the EPP deployment GPOs.....	9
4. Linking the WMIs to each of the GPOs	13
5. Linking the GPO to organization units.....	14
6. Important Notice / Disclaimer	16

1. Introduction

Endpoint Protector Client software is delivered as a Microsoft Installer file `msi`, in order to be easily deployed using Active Directory, but also using a third party software.

Endpoint Protector comes in 2 versions: 32 bit and 64 bit targeted installers as the driver contained within the application can only be built and installed separately for each of the two operating system types.

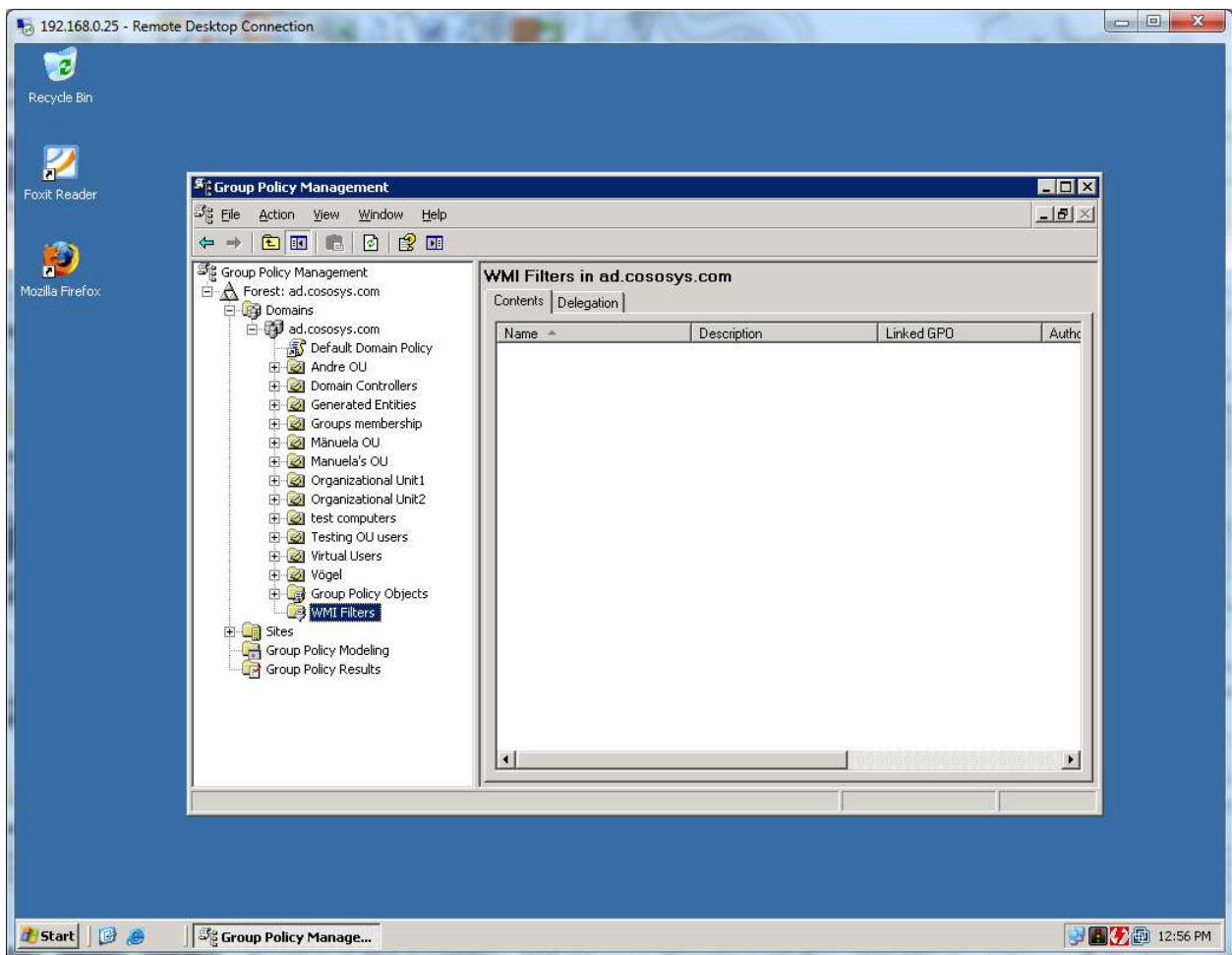
Because of the two versions of the Endpoint Protector Client installer, 2 different GPOs will be created in the Active Directory, each of them having set parameters to install each of the two clients.

The 2 GPOs will be then filtered using WMI filters in order to be applied only on the computers for which they are created. The GPOs will be later linked to each Organization Unit on which you want to perform the deployment.

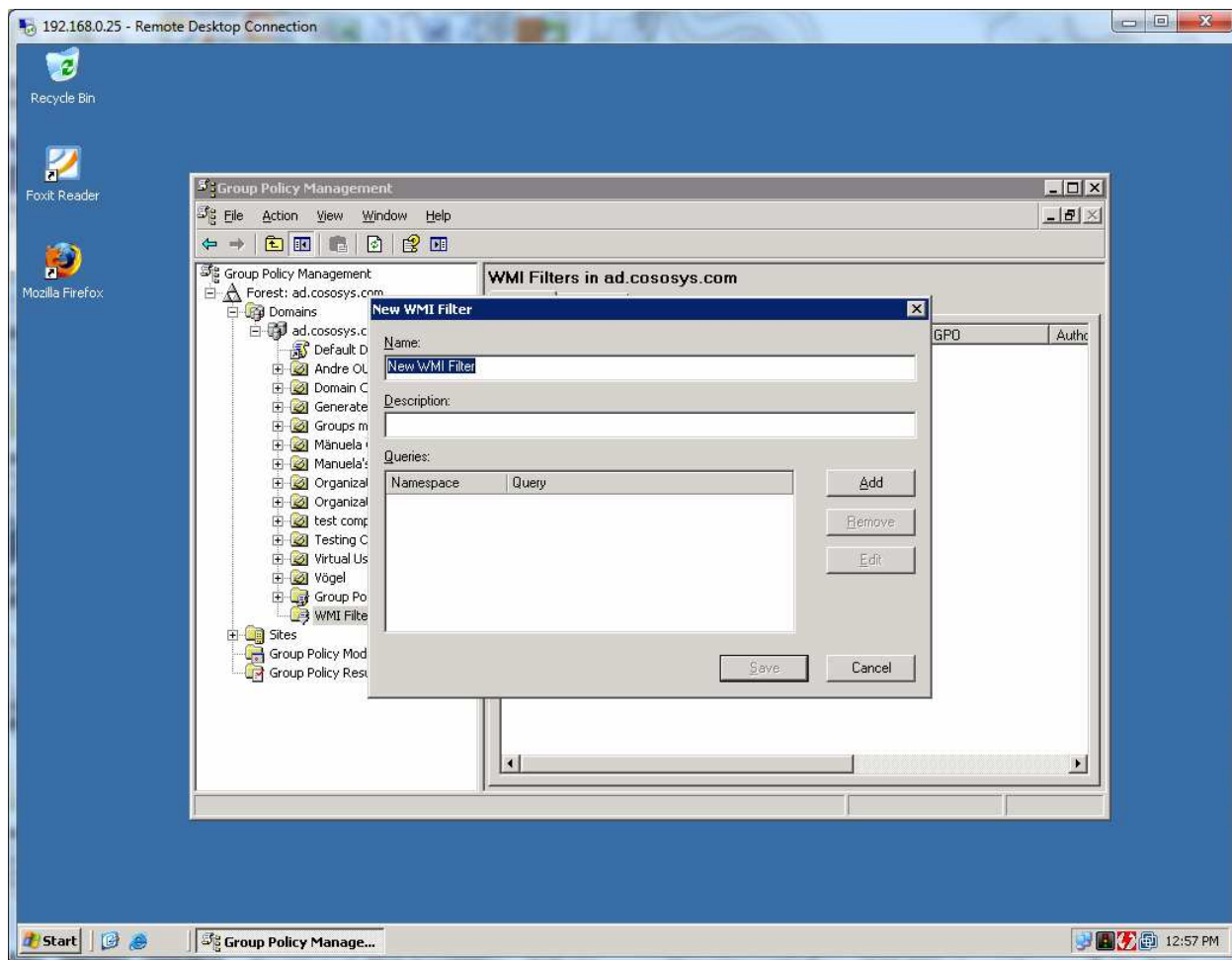
This document presents a basic and functional overview of the deployment strategy of Endpoint Protector Client software. The Administrator has the possibility to modify and adjust these techniques to his environment.

2. Creating the WMI filters

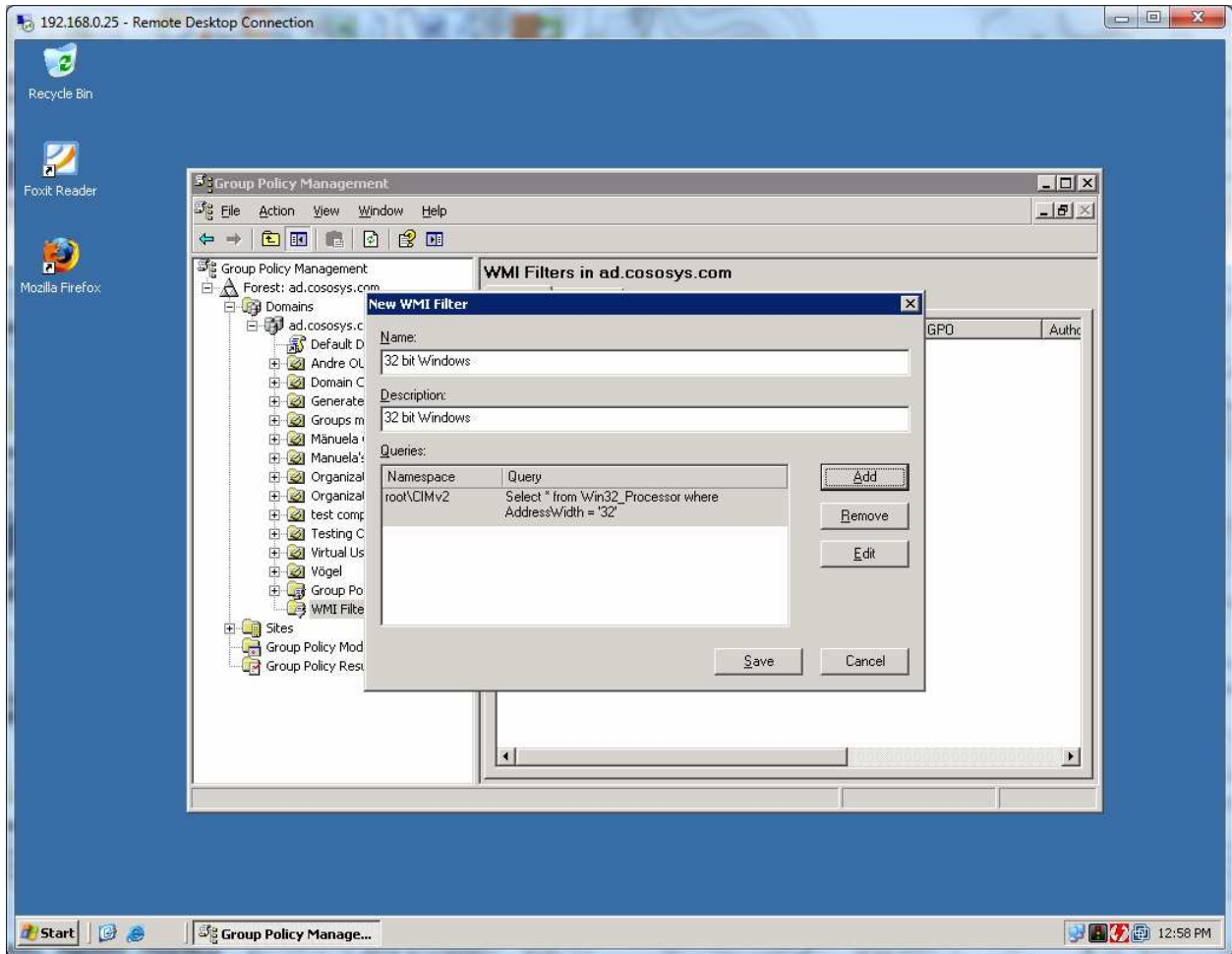
In order to create a WMI filter, go to Group Policy Management console, expand Domains and then your domain tree.



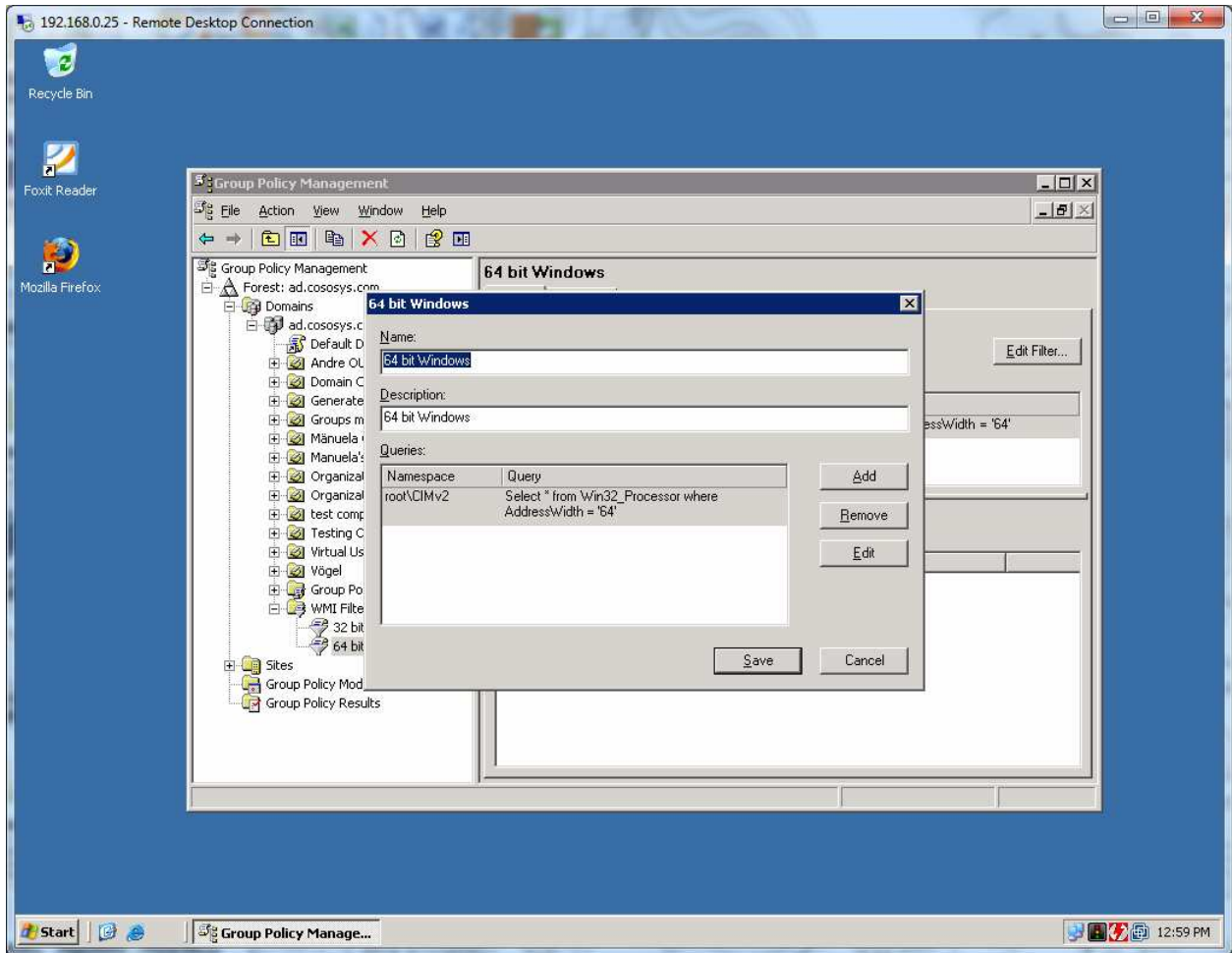
Right click on WMI Filters and select New.



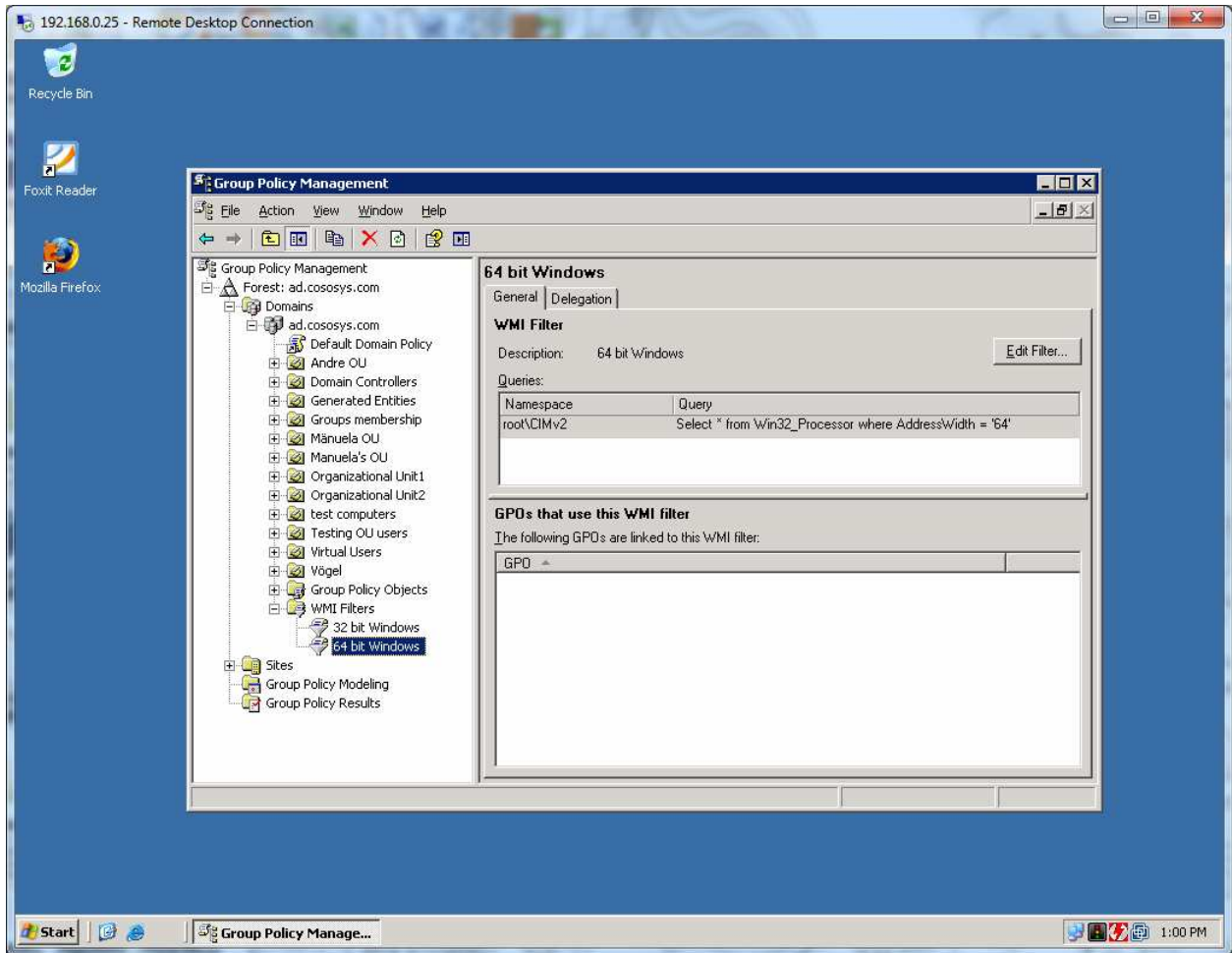
Provide the name, description and queries as in the following image:



Repeat this step for the 64 bit WMI filter.



As a result, you should see 2 new filters under WMI Filters.



Selecting the 32 bit and 64 bit operating systems:

32-bit Operating System

Select * from Win32_Processor where AddressWidth = '32'

64-bit Operating System

Select * from Win32_Processor where AddressWidth = '64'

Further queries can be added if you want to target certain operation systems and/or type of computers:

Workstation

Select * from WIN32_OperatingSystem where ProductType=1

Domain Controller

Select * from WIN32_OperatingSystem where ProductType=2

Server

Select * from WIN32_OperatingSystem where ProductType=3

Windows XP

Select * from WIN32_OperatingSystem where Version='5.1.2600' and ProductType=1

Windows Vista

Select * from WIN32_OperatingSystem where Version='6.0.6002' and ProductType=1

Windows 7

Select * from WIN32_OperatingSystem where Version='6.1.7600' and ProductType=1

Windows 2003

Select * from WIN32_OperatingSystem where Version='5.2.3790' and ProductType>1

Windows 2008

Select * from WIN32_OperatingSystem where Version='6.0.6002' and ProductType>1

Windows 2008 R2

Select * from WIN32_OperatingSystem where Version='6.1.7600' and ProductType>1

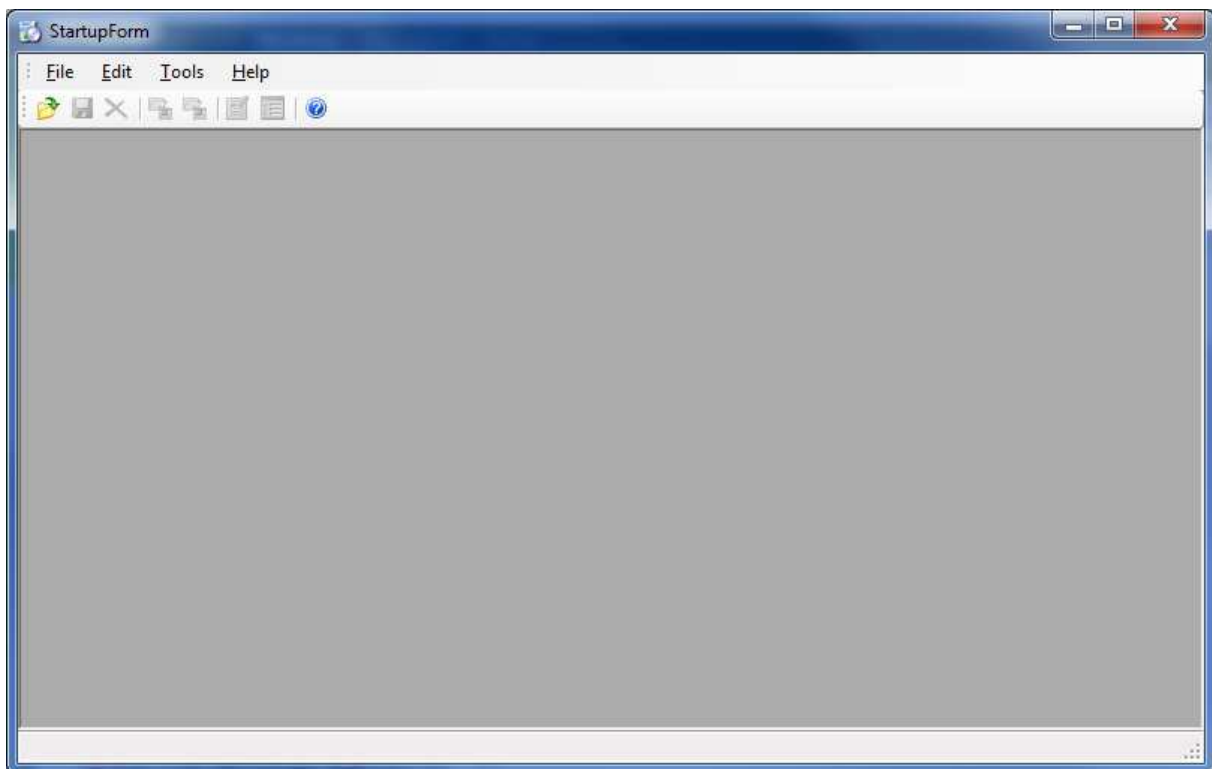
3. Creating the EPP deployment GPOs

IMPORTANT!

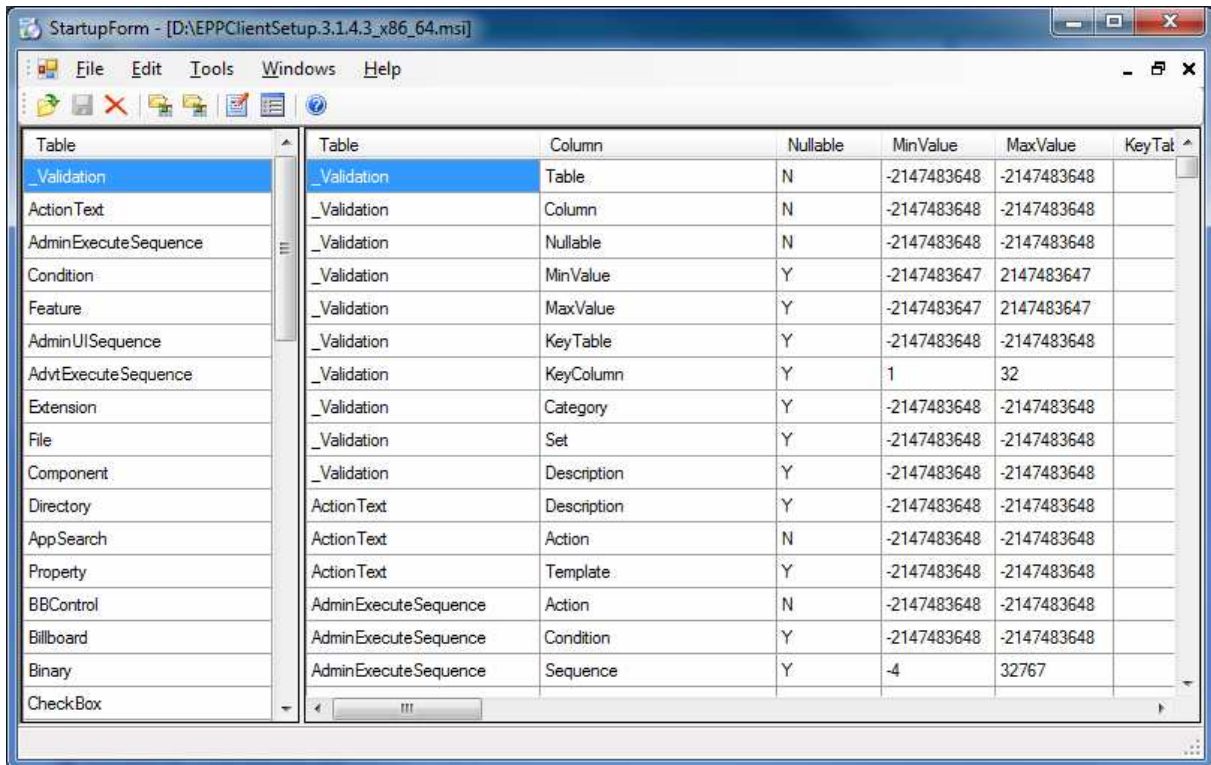
In case you have to deploy Endpoint Protector Client software for Endpoint Protector 2009, you need to modify the Endpoint Protector Client using a free tool like Orca, Super Orca or Easy MSI Editor to adjust the IP of the Endpoint Protector Server.

Example (using Easy MSI Editor):

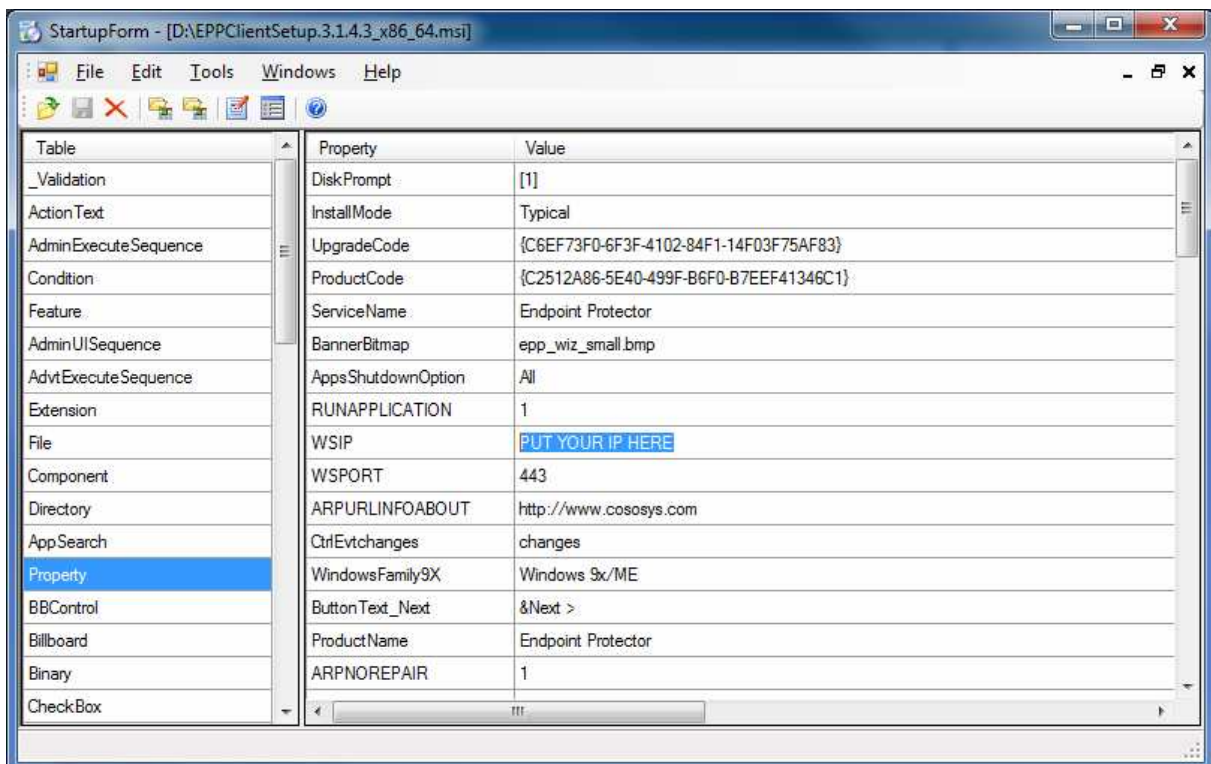
Open the Easy MSI Editor software.



Then, using File/Open commands from the main menu, select the Endpoint Protector `msi' file.



On the left tab select Property and then on the right side select and edit WSIP value.

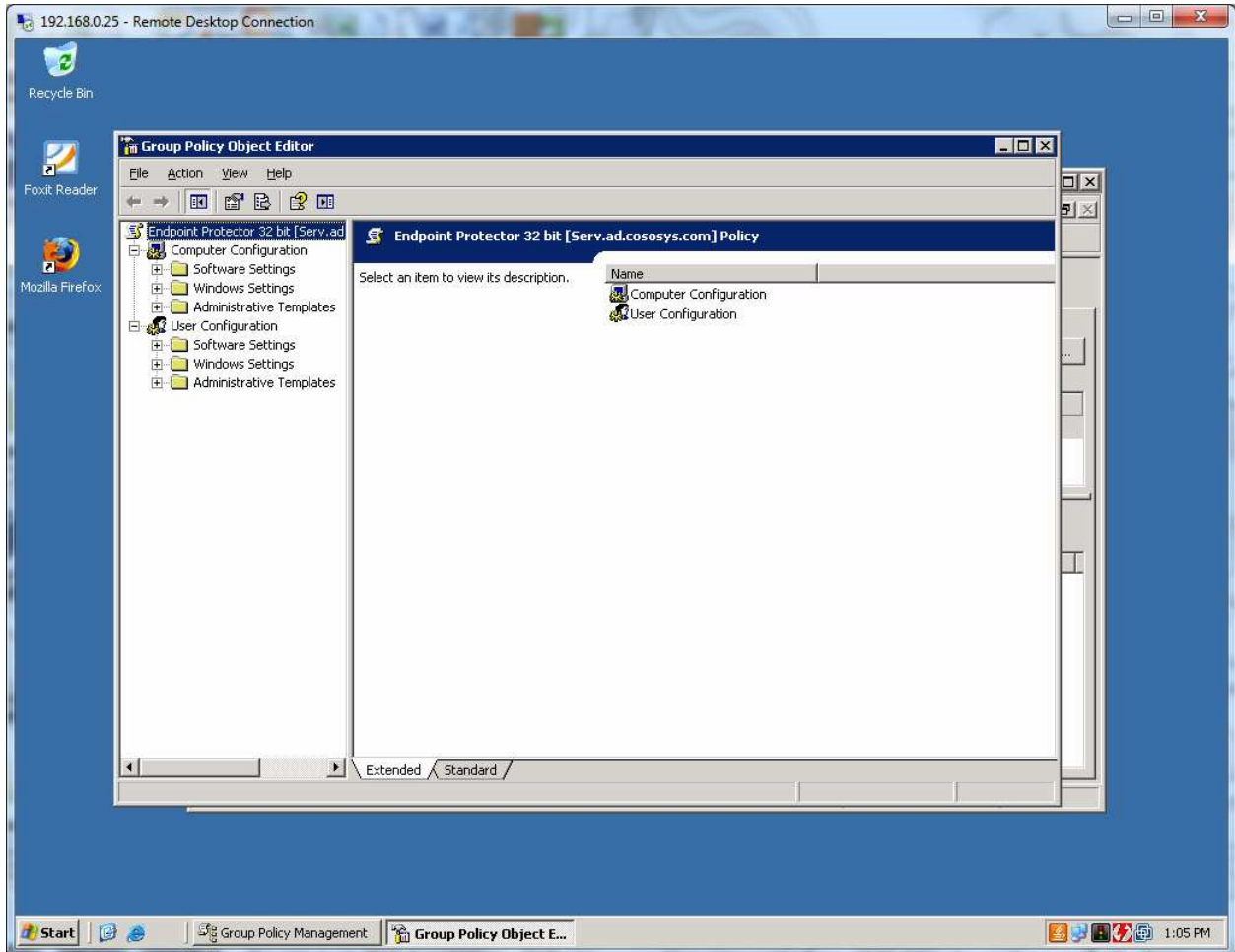


Then, select File/Save from main menu to save the file.

In Group Policy Management console right click on Group Policy Objects and select New.

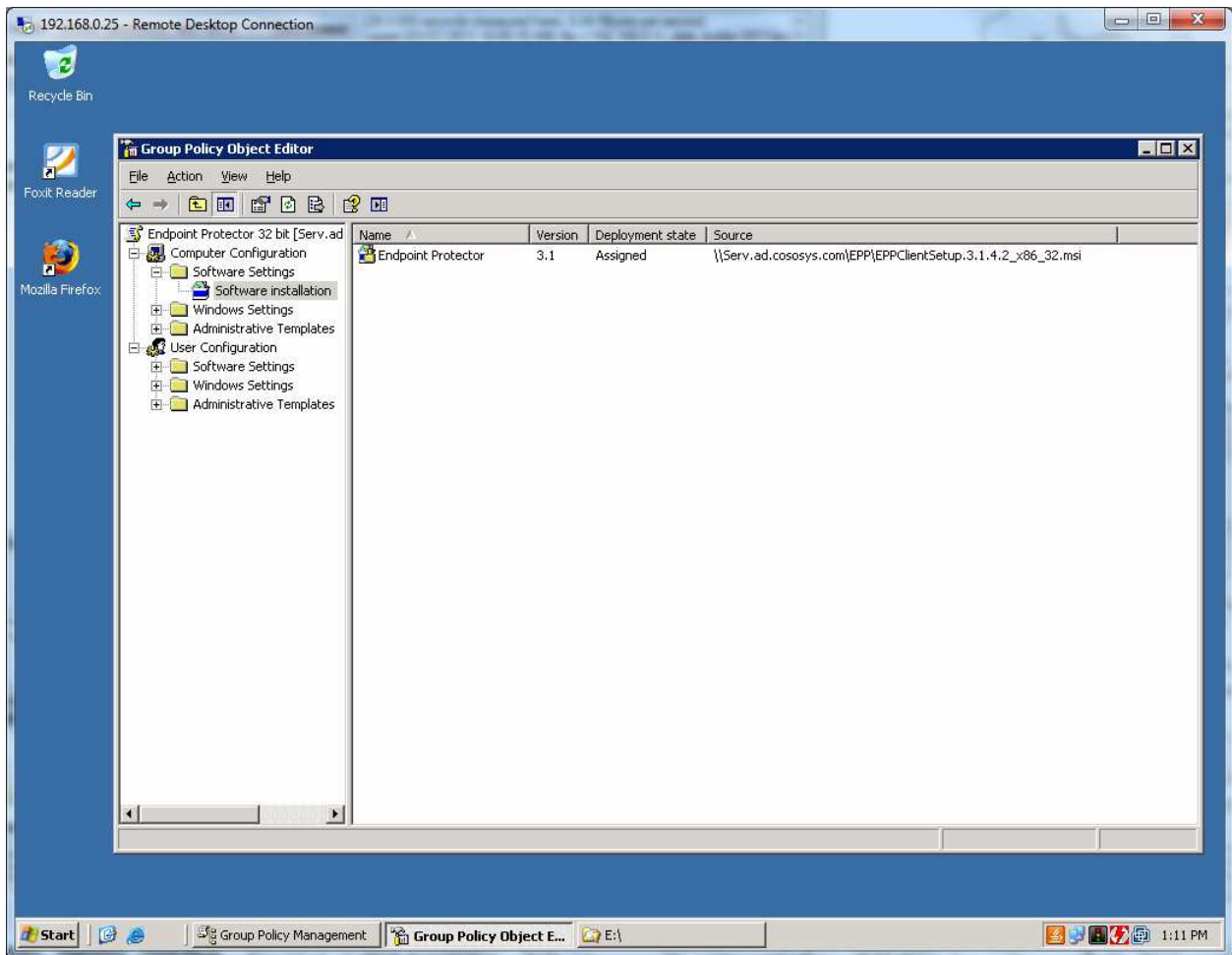
Add the name of the new GPO: - Endpoint Protector 32 bit

Right click on the new created GPO and select Edit.



Expand Computer Configuration / Software Settings and right click Software Installation, then select New/Package.

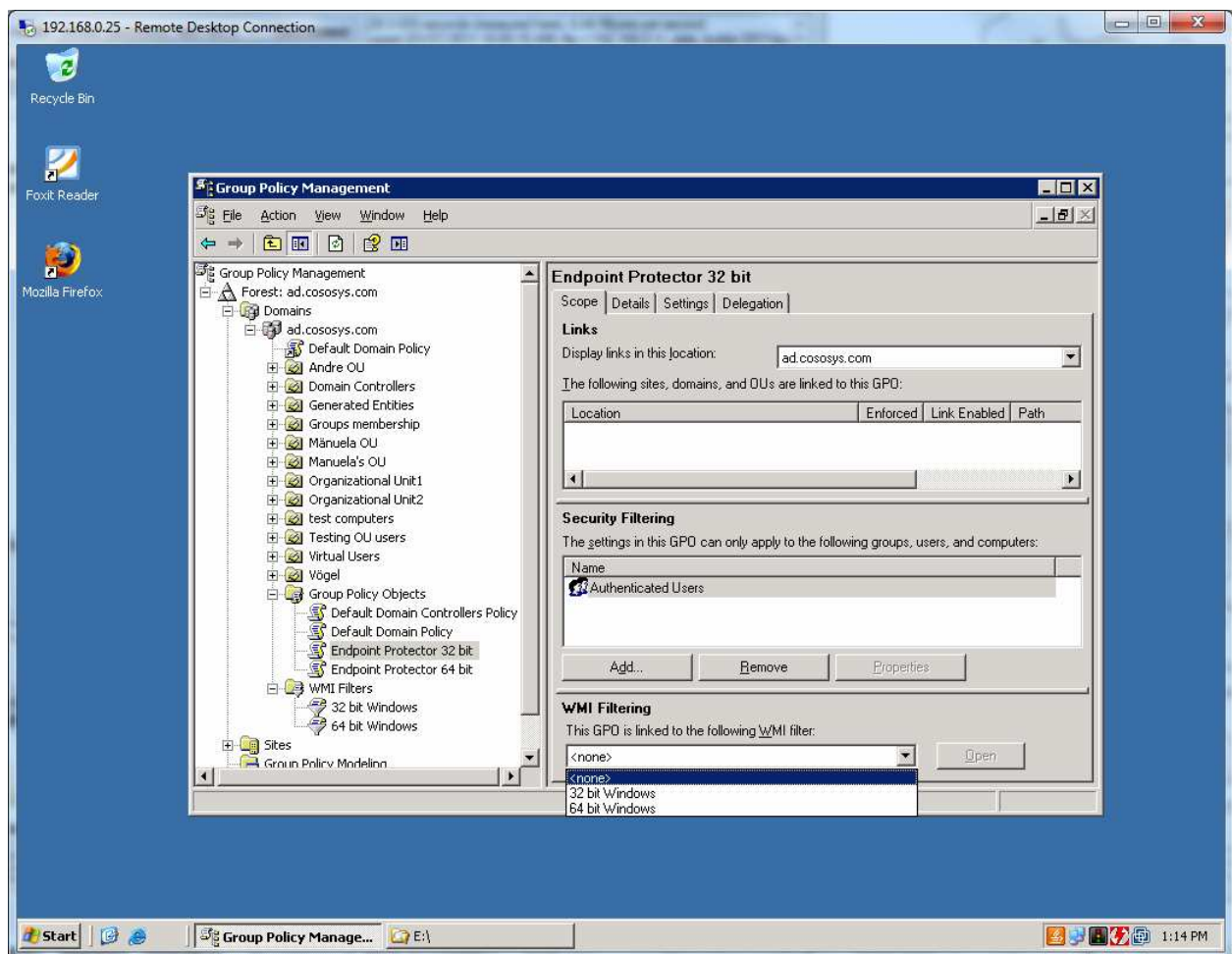
When browsing for the 'msi' file, please make sure it is on a folder which is shared over your network and accessible by the computers on your AD.



Please close the Group Policy Object Editor console and repeat this step for Endpoint Protector 64 bit GPO.

4. Linking the WMIs to each of the GPOs

In Group Policy Management Console, select the Endpoint Protector 32 bit policy and in the right window, under WMI Filtering tab, select 32 bit Windows Filter

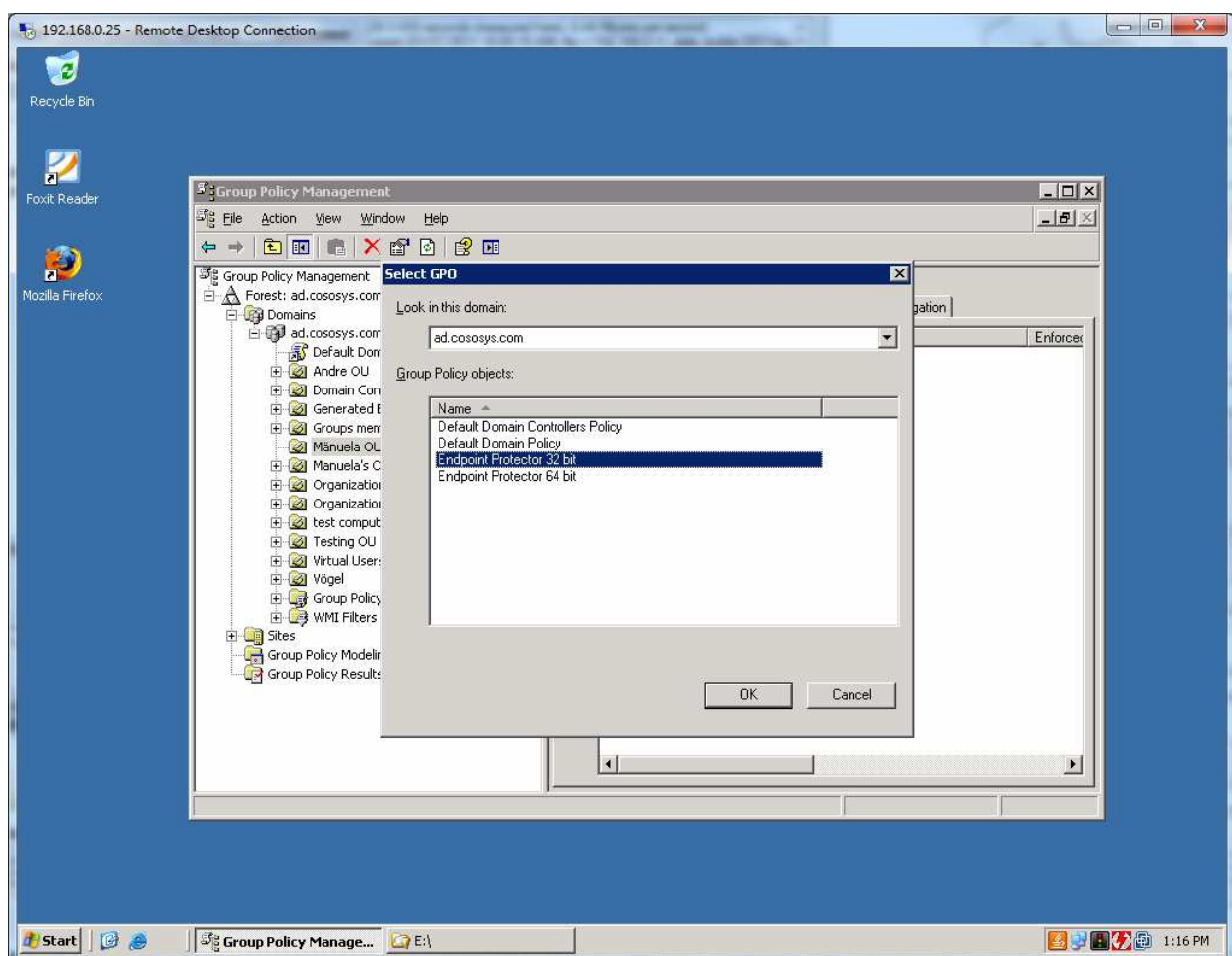


Repeat the step above for Endpoint Protector 64 bit GPO.

5. Linking the GPO to organization units

Newly created GPOs can be linked now to any of your OU.

Right click on your selected OU and select the option "Link an Existing GPO".



Select Endpoint Protector 32 bit and then press OK.

Repeat the previous steps for the same OU, but now selecting Endpoint Protector 64 bit GPO.

Please note that these new policies will be applied only when the target computers will be rebooted.

6. Important Notice / Disclaimer

Security safeguards, by their nature, are capable of circumvention. CoSoSys cannot, and does not, guarantee that data or devices will not be accessed by unauthorized persons, and CoSoSys disclaims any warranties to that effect to the fullest extent permitted by law.

© 2004 – 2011 CoSoSys Ltd.; Endpoint Protector Basic, EPPBasic, Endpoint Protector, My Endpoint Protector are trademarks of CoSoSys Ltd. All rights reserved. Windows and Orca are registered trademarks of Microsoft Corporation. Macintosh, Mac OS X are trademarks of Apple Corporation. Easy MSI Editor and SuperOrca are trademarks of Neone Systems and, respectively, of Pantaray Research. All other names and trademarks are property of their respective owners.